

xiaomi Solar Outdoor Camera BW400 Pro Set User Manual



Read this manual carefully before use, and retain it for future reference.

Precautions

- The operating temperature range for the camera is -20°C to 55°C, and that for the base station is -10°C to 45°C. Do not use the product in environments with temperatures above or below the specified operating ranges.
- The camera is a precision electronic product that has an IP66 dust-tight and water-resistant rating. Do not use the camera in extremely humid environments or locations that may cause water ingress to ensure normal use.
- Do not expose the camera lens to direct sunlight, as this may damage the product's photosensitive components.
- To improve the camera's performance, do not place its lens facing or next to a reflective surface, such as glass or white walls, as this will cause the image to appear overly bright in areas close to the camera and darker in areas further away, or cause the camera to produce white images.
- Make sure that the product is installed in an area with a strong Wi-Fi signal. Do not install the product near microwave ovens, and other objects or places that affect its Wi-Fi signal.
- The base station supports standard microSD cards with a capacity of 16 to 256 GB and a read/write speed of Class 10 or above.
- When the night vision feature is enabled, the change of ambient light will trigger the filter to change, probably accompanied by a slight click sound, which is normal.
- Keep the product away from strong magnetic environments and do not subject the product to severe shock

or vibration.

- When charging, use the charging cable included in the package. When charging with a power adapter, use only a qualified power adapter (with an output of 5 V $\overline{\text{---}}$ 2 A) that meets safety standards. Charging should be carried out indoors in a well-ventilated environment.
- The product contains a non-detachable lithium-ion battery. It has a maximum allowable altitude of 15240 meters for air transportation. Keep it away from fire or other heat sources. Do not attempt to replace the battery yourself as this may damage the battery or the product. The battery should only be replaced by an authorized service center and only with the same type of battery; replacing with an incorrect battery type may invalidate the battery safety protection.
- Illustrations of product, accessories, and user interface in the user manual are for reference purposes only. Actual product and functions may vary due to product enhancements.

Product Overview

Package Contents



Camera



Base Station



Camera Mount



Charging Cable



Ethernet
Cable



Mounting Template
Sticker



Screw × 4



Wall Plug × 4

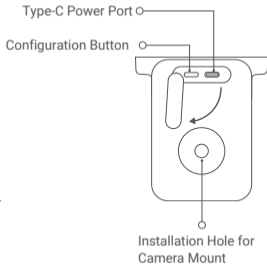
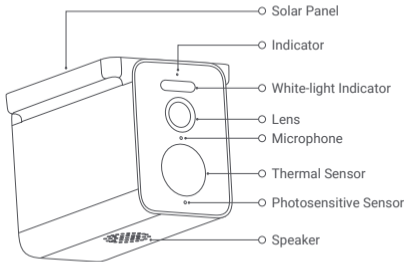


Attention Sticker

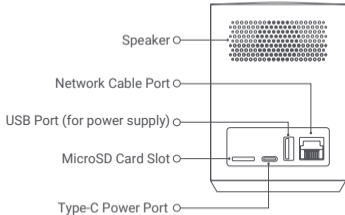
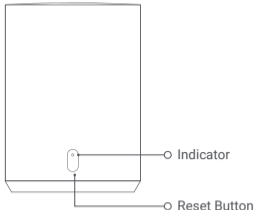


User
Manual

Camera



Base Station



How to Use

Camera

Charging: Please fully charge the camera before use. Connect the charging cable and a power adapter with an output of 5 V \approx 2 A, and then switch on the power to charge the camera.

Turning on/off: Press and hold the configuration button for approx. 3 seconds.

Resetting the device: Press and hold the configuration button for approx. 7 seconds while the camera is turned on.

Indicator Status

Awaiting connection: Blinking orange

Charging: Breathing white

Connecting: Blinking blue

Fully Charged: Indicator off

Connected successfully: Keeping blue

Base Station

The base station needs to be added in the Mi Home/Xiaomi Home app and paired to the camera. Locally recorded videos by the camera will be saved in the microSD card of the base station according to the relevant settings in the Mi Home/Xiaomi Home app.

Turning on: Connect the charging cable and a power adapter with an output of 5 V \approx 2 A, and then the base station will automatically turn on when the power is switched on.

Turning off: The base station will automatically turn off when the power is switched off.

Resetting the base station: Press and hold the reset button for approx. 7 seconds while the base station is turned on.

Indicator Status

Awaiting connection: Blinking orange

Connected successfully: Keeping blue

Connecting: Blinking blue

Connecting with the Mi Home/Xiaomi Home App

This product works with the Mi Home/Xiaomi Home app*. Use the Mi Home/Xiaomi Home app to control your device, and to interact with other smart home devices.

1. Scan the QR code to download and install the app. You will be directed to the connection setup page if the app is installed already. Or search for "Mi Home/Xiaomi Home" in the app store to download and install it.
2. Power on the base station and turn it on. Open the home page of the Mi Home/Xiaomi Home app, tap "+" at the top right corner of the page, scan the QR code on the base station, and follow the on-screen instructions.
3. Select a network access method according to on-screen instructions, and then complete the adding process of the base station. Once the base station is successfully connected, the indicator will keep blue.



6FB1AF43

4. Continue adding the camera according to on-screen instructions. Press and hold the configuration button for approx. 3 seconds to turn on the camera, scan the QR code on the camera, and then complete the adding process of the camera according to on-screen instructions. Once the camera is successfully connected, the indicator will keep blue.

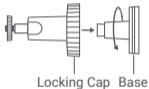
* The app is referred to as Xiaomi Home app in Europe (except for Russia). The name of the app displayed on your device should be taken as the default.

Notes:

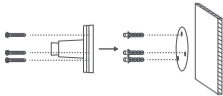
- If Wi-Fi is selected as the network access method for the base station, make sure that the phone is already connected to the Wi-Fi network and that the phone is placed as close to the base station as possible.
- If a network cable is selected as the network access method for the base station, make sure that the LAN port to be connected has a network signal. Make sure that the phone and the base station are connected to the same router or LAN and that the phone is placed as close to the router as possible.
- If the camera is not added in the Mi Home/Xiaomi Home app timely after the base station is successfully connected, or if the camera needs to be added to a specified base station, please go to the home page of the Mi Home/Xiaomi Home app and select the base station, then follow the on-screen instructions to add the camera.
- This product only supports connection to 2.4 GHz Wi-Fi networks, 5 GHz Wi-Fi networks are not supported.
- Please add and connect the camera in the Mi Home/Xiaomi Home app first, and then install the camera.
- The version of the app might have been updated, please follow the instructions based on the current app version.

How to Install

① Turn counterclockwise to open the camera mount.



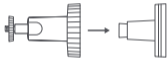
· Select a suitable mounting position (it is recommended to be 2-3 m



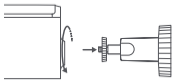
above the ground and there are no buildings or trees around the mounting wall surface), and then place the mounting template sticker on a flat wall surface.

- Drill holes (each hole has a diameter of 6 mm and a depth of 30 mm) and install wall plugs.
- Fix the base to the wall with screws.

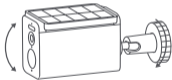
⑤ Fix the locking cap onto the base.



⑥ Hold the camera by hand and fix it to the camera mount.



⑦ Hold the camera by hand and adjust the angle. After adjustment, tighten the locking cap.



Specifications

Name: Smart Camera Set	Wireless Connectivity: Wi-Fi IEEE 802.11 b/g/n 2.4 GHz
Model: MJSXJ03BY	Wi-Fi Operation Frequency: 2400–2483.5 MHz
Camera	Wi-Fi Maximum Output: < 20 dBm
Rated Input: 5 V \equiv 2 A	Base Station
Aperture: f/1.6	Rated Input: 5 V \equiv 2 A
IP Rating: IP66	Operating Temperature: -10°C to 45°C
Lens Viewing Angle: 132°	Wireless Connectivity: Wi-Fi IEEE 802.11 b/g/n 2.4 GHz
Video Codec: H.265	Compatible with: Android 8.0 & iOS 12.0 or above
Resolution: 2560 × 1440	Wi-Fi Operation Frequency: 2400–2483.5 MHz
Operating Temperature: -20°C to 55°C	Wi-Fi Maximum Output: < 20 dBm

Warranty Notice

As a Xiaomi consumer, you benefit under certain conditions from additional warranties. Xiaomi offers specific consumer warranty benefits which are in addition to, and not instead of, any legal warranties provided by your national consumer law. The duration and conditions related to the legal warranties are provided by respective local laws. For more information about the consumer warranty benefits, please refer to Xiaomi's official website <https://www.mi.com/global/support/warranty/>. Except as prohibited by laws or otherwise promised by Xiaomi, the after-sales services shall be limited to the country or region of the original purchase. Under the consumer warranty, to the fullest extent permitted by law, Xiaomi will, at its discretion, repair, replace or refund your product. Normal wear and tear, force majeure, abuse or damage caused by the user's negligence or fault are not warranted. The contact person for the after-sale service may be any person in Xiaomi's authorized service network, Xiaomi's authorized distributors or the final vendor who sold the products to you. If in doubt please contact the relevant person as Xiaomi may identify.

The present warranties do not apply in Hong Kong and Taiwan.

Products which were not duly imported and/or were not duly manufactured by Xiaomi and/or were not duly acquired from Xiaomi or a Xiaomi's official seller are not covered by the present warranties. As per applicable law you may benefit from warranties from the non-official retailer who sold the product. Therefore, Xiaomi invites you to contact the retailer from whom you purchased the product.

WEEE Information



All products bearing this symbol are waste electrical and electronic equipment (WEEE as in directive 2012/19/EU) which should not be mixed with unsorted household waste. Instead, you should protect human health and the environment by handing over your waste equipment to a designated collection point for the recycling of waste electrical and electronic equipment, appointed by the government or local authorities. Correct disposal and recycling will help prevent potential negative consequences to the environment and human health. Please contact the installer or local authorities for more information about the location as well as terms and conditions of such collection points.

EU Declaration of Conformity



Hereby, 70mai Co., Ltd. declares that the radio equipment type MJSXJ03BY is in compliance with Directive 2014/53/EU. The full text of the EU declaration of conformity is available at the following internet address: <http://www.mi.com/global/service/support/declaration.html>

Under normal use of condition, this equipment should be kept a separation distance of at least 20 cm between the antenna and the body of the user.



Please use the LPS adapter.

Importer:

Beryko s.r.o.

Pod Vinicemi 931/2, 301 00 Plzeň

www.beryko.cz

Manufactured for: Xiaomi Communications Co., Ltd.

Manufactured by: 70mai Co., Ltd.

(a Mi Ecosystem company)

Address: Room 2220, Building 2, No. 588 Zixing Road, Minhang District, Shanghai, China

For further information, please go to www.mi.com

User Manual Version: V1.0



7011AA800217